

# SANGFOR NGAF

## M4500-F-I

Sangfor Next Generation Application Firewall is the world first fully integrated NGFW + WAF with pre-event, during-event and post-event defense for all business assets.

A truly integrated firewall solution, providing holistic overview of the entire organization security network, with ease of management for administration, operation and maintenance.

NGAF M4500 is the ideal Converged Security solution for Small & Medium Enterprises. It is also ideal for Branch Deployment.

Gartner

ICSA Labs  
CERTIFIED FIREWALL - CORPORATE



Performance & Capacity	M4500-F-I
Dimension	Desktop
Firewall Throughput	2Gbps
NGFW Throughput <sup>1</sup>	1.4Gbps
WAF Throughput	1.4Gbps
IPS & WAF Throughput	1.2Gbps
Threat Protection Throughput <sup>2</sup>	1Gbps
IPSec VPN Throughput	250Mbps
Max IPSec VPN Tunnels	300
Concurrent Connections (TCP)	250,000
New Connections (TCP)	15,000
Dual Power Supply	N/A
Compliance	M4500-F-I
Certifications	CE, FCC

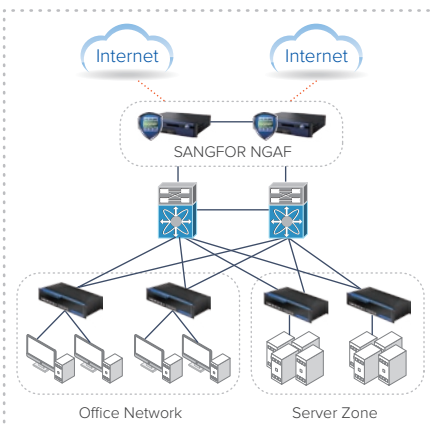
Hardware Specifications	M4500-F-I
RAM	2Gb
Storage HD Capacity	32G SSD
Power [Watt] Max	60W
Operating Temperature	0°C~40°C
Humidity	5%~95% non-condensing
System Weight	1.5 Kg
System Dimensions	275x175x44.5 mm (W x L x H)

Network Interfaces	M4500-F-I
Bypass (Copper)	N/A
10/100/1000 Base-T	3
SFP	N/A
10G Fiber SFP	N/A
Optional Interface & 10G Fiber SFP*	N/A
Serial Port	1 x RJ45
USB Port	2

<sup>1</sup> NGFW is measured with Firewall, Bandwidth Management, IPS, Application Control

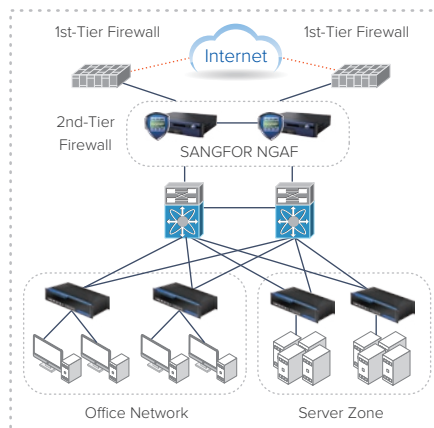
<sup>2</sup> Threat Prevention is measured with Firewall, Bandwidth Management IPS, Application Control, Anti Virus

### Deployment Modes



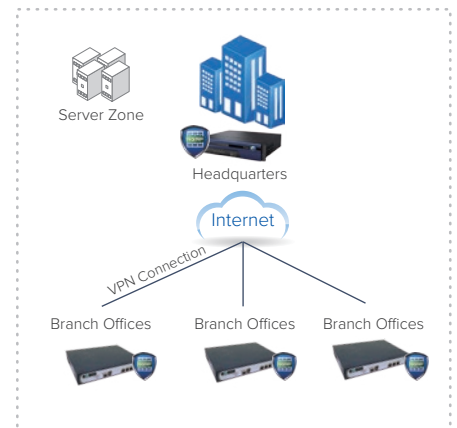
#### End-to-End Protection

- End-to-end protection from endpoint to business system
- Total visibility of the entire organization security status
- Provides High Availability features with Multi-line HA and Load Balancing
- Proactive early detection and prevention at the gateway to prevent attacks from reaching the network



#### Double Security (2nd-Tier Firewall)

- Double protection which complement existing firewall security policies to ensure full protection
- Providing regulatory compliance
- Simplified deployment, reducing downtime
- Provides flexibility of security design and security policies for different business requirements



#### Branch Deployment

- Secure connection to HQ via VPN
- Full protection of branches
- With Sangfor Central management Console, manage all NGAFs from a single point
- Total visibility of the entire organization security status
- Simple operation & management with reporting

## Key Features

### ① Lower TCO Converged Security Solutions

Fully converged security solution from endpoint to business systems, without the needs of manual integration & consolidation of each feature, as well as additional hardware, which results in lower operational and maintenance costs.

### ② User Friendly

A single simplified operation & maintenance with interactive GUI, which provides ease of configuration, maintenance, troubleshooting and reporting for IT managers, administrators and operations team.

## Security Features

### Converged Security

Integrated L2–L7 Security features:

- DoS/DDoS: Inbound, Outbound, Attack Protection
- Content Security
- IPS
- Anti-virus
- Engine Zero: AI based anti-malware, anti-virus
- APT
- Data Leakage Prevention
- Bandwidth Management
- Web Scanner
- Real-Time Vulnerability Scanner
- Security Reporter
- Neural-X: Cloud threat intelligence and analytics

## Software Features



### Networking

**Interface:** Physical Interface, Sub Interface, VLAN Interface, Aggregated Interface

**Routing:** Static, Policy-based, RIP, OSPF, BGP

**Network Functions:** ARP, DNS, DHCP, SNMP, NAT, High Availability



### Access Control

**User:** Import / export from external server

**Authentication:** SSO/LDAP/RADIUS

**Application:** ACL and application rules

**URL Filter:** Supported



### VPN

SANGFOR VPN, IPSEC VPN and SSL VPN supported  
SDWAN auto path selection



### Management

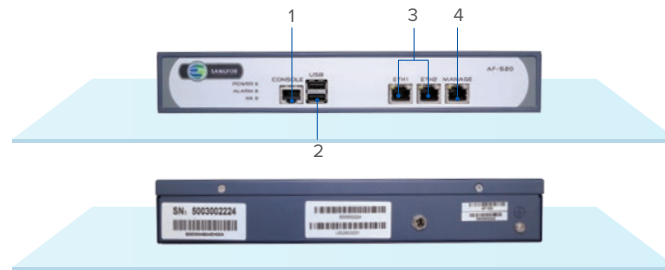
SNMP v1, v2c, v3

Syslog

Real-Time Vulnerability Scanner

Central management

## Hardware Description



1. Management Console
2. USB ports
3. Line Interface
4. Default Interface

All Pictures shown are for illustration purpose only. Actual Product may vary.

## NGAF M4500-F-I Ordering Guide

DESCRIPTION
<b>NGAF Hardware &amp; Base Software (Mandatory)</b>
M4500-F-I, hardware, Site-to-site IPsec VPN with 10 IPsec Clients included.
<b>NGAF Hardware &amp; Base Software (Mandatory)</b>
M4500-F-I, NGFW license suite, FW, BM, IPS, URL&APP, Email Security, Sandboxing, Risk Assessment, Security Visibility, Basic security reporter: 1 year, 3 years or 5 years options.
<b>NGAF Software Module, Service Subscription (Optional)</b>
Engine Zero, Neural-X, Security Butler, 1 year, 3 years or 5 years options. IPSec VPN Remote Client, IPSec VPN Remote Client , 1 User
<b>NGAF-NGFW Software Upgrade, 24*7 Technical Support, NGAF RTF (Return to Factory), Hardware Service (Mandatory)</b>
M4500-F-I, NGFW software upgrade, 24*7 technical support, NGAF RTF hardware service : 1 year, 3 years or 5 years options.

For more information on Sangfor' full range of support & services, please contact your local representative.

NGAF\_DS\_P-NGAF45-Datasheet\_20190410