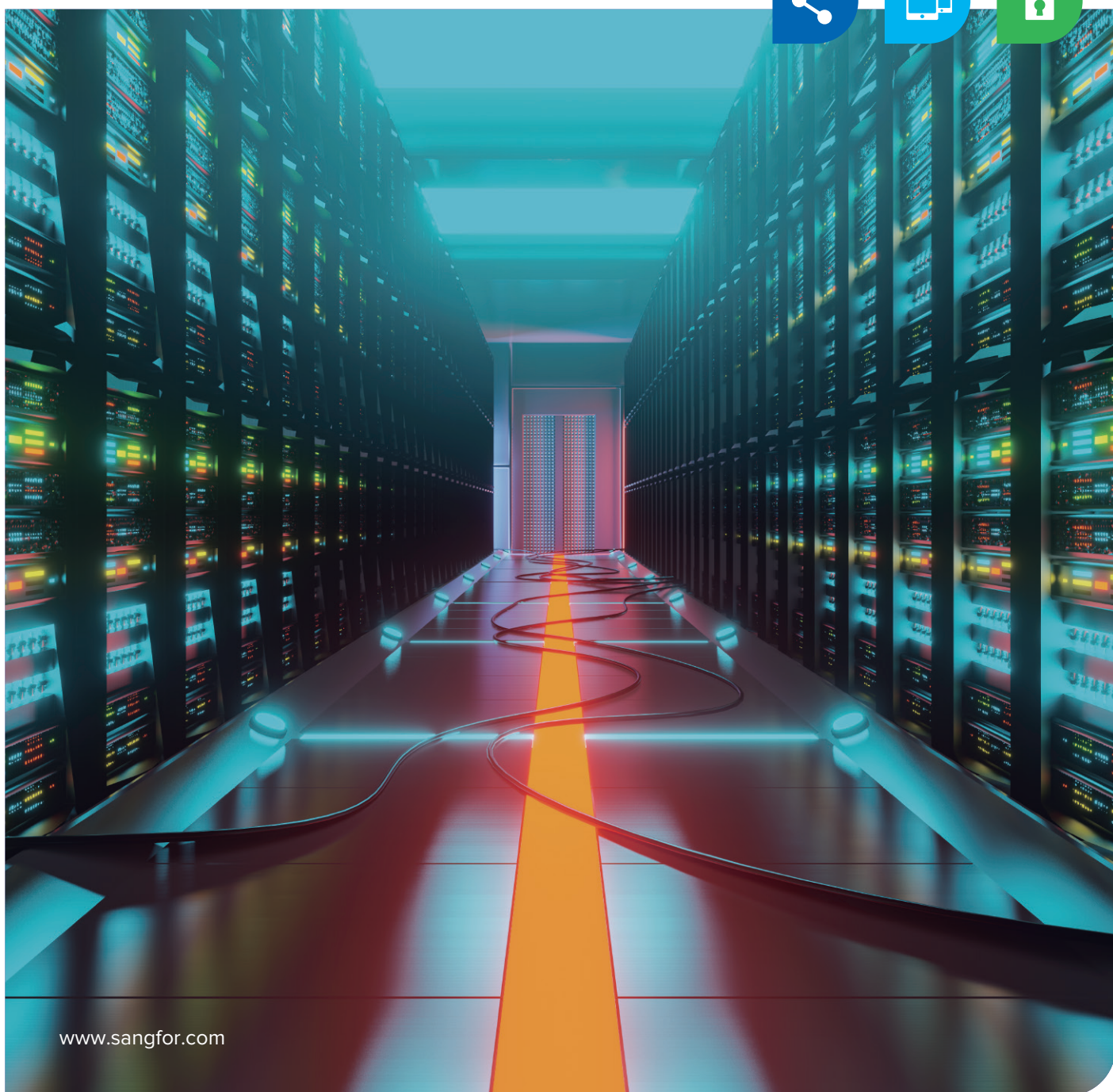


SANGFOR HCI

Hyper-Converged Infrastructure



Fully Converge Your Data Center



www.sangfor.com



Traditional 3-Tier Data Center — Challenges & Limitations

IT is a fast changing industry. With organizations trying to follow the trend of digitalization and stay agile at all time, IT departments are looking at growing and seemingly endless requests for better and faster services delivery, as well as increased efficiency and robust operating environment. The driving force that ensures your business stays ahead and evolves smoothly, is your data center.

The revolution of x86 server virtualization over a decade ago marked the change of IT service delivery. However, the rest of the IT infrastructure in the data center haven't kept up, namely the virtualization of networking, security and storage.



What was the Time Spent On?

The traditional data center is very delicate in many ways, the work it takes to keep it running properly is complex and tedious – deployment, expansion, resource scheduling, upgrade, maintenance, troubleshooting, fault tolerance and release of new versions – these have occupied the majority of time of IT department's daily work.



What was the Money Invested in?

With traditional data center, the provision of new services usually starts with planning and scaling of networking, and hardware selection. Organizations also take into account their overall planning for the next 3-5 years. As a result, the actual quantity of device purchased and model selected shall exceed the current business needs to a great extent, thus leading to a considerable amount of investment in advance. Not to mention the speed data center technology is evolving and the follow-up investment that comes with it.



Is Current Architecture Scalable?

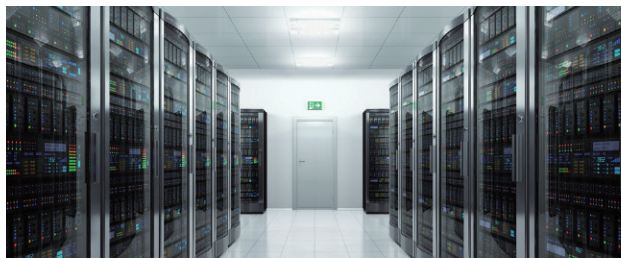
Whenever new business needs to go online or data center needs expansion, it requires supplementary storage and massive data migration; and the IT department have to go over the entire hardware planning/selecting process again. Not to mention the manpower it takes to set it up and keep in running.



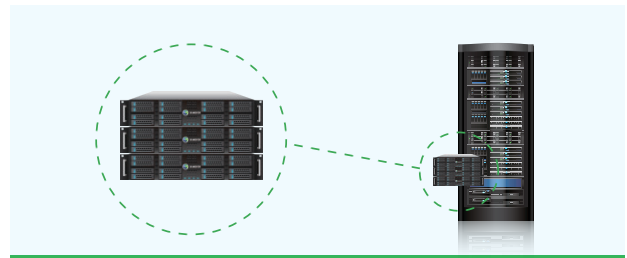
Is Your Data Center Cloud Era Compatible?

With the emergence of "The Era of Cloud", increasingly people are resorting to Cloud to deal with the hurdles physical data center brings – namely expensiveness, inefficiency and difficulty to manage – in business transitions. However, it's not the case that you could enjoy the full breadth of benefits that go with cloud at a snap of finger. Easily put your IT architecture needs to be simplified and automated.

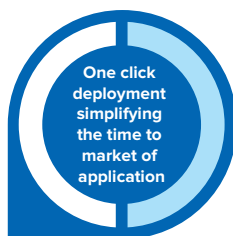
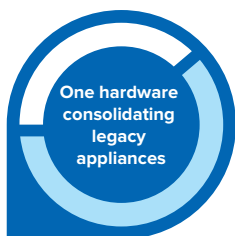
Sangfor HCI Solution



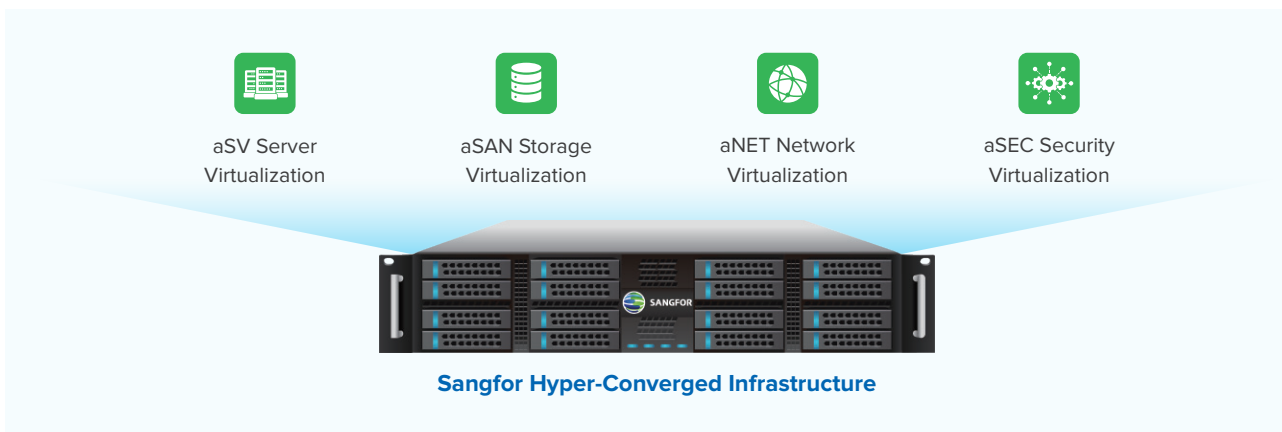
Traditional Data Center



Data Center with Sangfor HCI



Sangfor HCI at a Glance



5-Tier Architecture Consolidated into 1 1 Single User Interface Managing All IT Resources

Sangfor Hyper-Converged Infrastructure (HCI) provides innovative 3rd-gen cloud computing architecture that reduces at least 70% of the TCO, simplifies operations, and multiplies network security. It converges compute, storage, networking and security on a single software stack. The foundation of all these are Server Virtualization (aSV), Storage Virtualization (aSAN) and Network Virtualization (aNET), on top of that we have Security Virtualization (aSEC) which is the built-in cloud security center on HCI that provides comprehensive protection with full integration of Sangfor security solutions like vAF and endpoint secure.



Highlights of Sangfor HCI

aSAN (Storage Virtualization)

Built with multi-copies and data is written synchronously to ensure data consistency.

Multiple innovative features enable Sangfor HCI to reach 1 million IOPS with just three nodes, including SSD caching and patented I/O localization technology - aSAN detects where a VM's data is stored and makes it a priority to run the VM on that physical host, which dramatically increases IOPS in a clustered environment.

aSV (Hypervisor)

Proactive HA, intelligent DRS, VM resource hot add, NUMA and resource over-commitment bring you the ultimate performance and consolidation ratio of server virtualization.

Ultra Simple Deployment & Operation

Deploy the infrastructure with "what you draw is what you get" topology to get your business online in minutes.

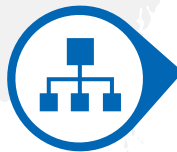
Manage your infrastructure through a unified dashboard and get AI-driven insights with a virtualized data center that displays the real-time flow.

Disaster Recovery Management (DRM)

Sangfor provides a choice of disaster recovery solutions, including active-active stretched cluster and active-passive DR for Sangfor HCI customers and active-passive DR for third-party hypervisors and servers.

More Secure Than Ever

Brand-new aSecurity cloud security center integrates all the security products you need to protect your entire architecture, including built-in web application firewall, next-generation firewall, EDR, distributed IPS and more.



Reduced TCO & Scale as you Grow

Minimum 70% reduction in overall CapEx & Opex than traditional data center. Up to 90% reduction in power, cooling and space. Start from 2 nodes and scale linearly according to your need without limits. Shift your focus to business. IT could be a revenue generating department instead of a cost center.

Distinguished Performance

Reach 1 Million IOPS with just 3 nodes (NVMe). High stability and reliability ensured by vAD business clustering, HA (High Availability), distributed management platform, distributed virtual networking device, multi-copies, back-up plans etc.

Best Security Integration

Sangfor leverages its powerful security capabilities on HCI to provide comprehensive security posture for the workloads and the platform. Not only does it provide distributed firewall and vAF for network traffic protection, it also provides a built-in cloud security center to manage VM security with capabilities like EDR and distributed IPS. Not to mention the correlative security service integration that's only possible with Sangfor one-stop integration of security and cloud.

Sangfor HCI

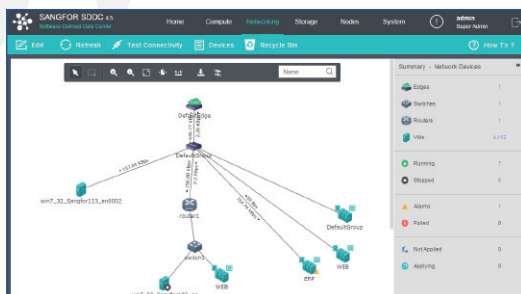


Hybrid Cloud

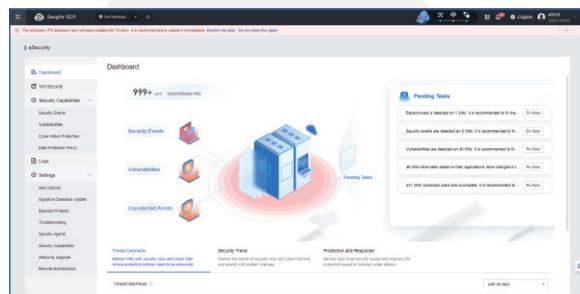
Multi Cloud

Transit Smoothly into Multicloud Era

Build Data Center by Simple Drawing Your Architecture



Built-in Cloud Security Center



Business Use Cases with Sangfor HCI



Data Center Consolidation

Getting rid of legacy architecture and complex costly data centers with Sangfor's software-defined HCI technology.



Cloud Transformation

Deploy the HCI cloud platform engineering for superior and leading virtualization for your enterprise - providing scalability and agility.



Data Protection & Disaster Recovery

Business continuity is prioritized with effortless and secure data recovery and disaster recovery options such as snapshot, CDP and stretched cluster.



VMware Alternative

Replace VMware infrastructure with a modern platform offering enhanced cost-efficiency, proven stability and VMware-like operational experience.

Sangfor HCI's Awards & Achievements



Gartner® Peer Insights™

Strong Performer in the Gartner® Peer Insights™ Voice of the Customer for Full-Stack HCI Software (2023-2024)



Gartner Market Share

Top 5 Largest HCIS Vendor by Revenue Worldwide for 2024



Gartner Market Guide

Representative Vendor in Gartner® Market Guide for Full-Stack Hyperconverged Infrastructure Software



SAP Certification

SAP Certified for Cloud and Infrastructure Operations and SAP HANA Operations



A Sample Vendor for VMware Alternative

In Gartner's A Guide to Choosing a VMware Alternative in the Wake of Broadcom Acquisition report



Listed in Forrester Now Tech

Listed in "Now Tech: Hyperconverged Infrastructure, Q2 2020"

Sangfor HCI aServer Models Datasheet

Model	aServer-3000	aServer-3100	aServer-3205
CPU	Intel 4310 2.1GHz 12C/24T 120W	Intel 6326 2.9GHz 16C/32T 185W	Intel 4314 2.4GHz 16C/32T 135W
CPU Cache	18MB	24MB	24MB
No. of CPU	1	1	2
Supported Memory	32GB or 64GB DDR4 3200MHz	32GB or 64GB DDR4 3200MHz	32GB or 64GB DDR4 3200MHz
Configured Memory	32GB*4	32GB*4	32GB*4
RAM Slots	32 (only 16 are available)	32 (only 16 are available)	32
OS Disk	1*480GB 2.5" SATA SSD Occupy front disk slot	1*480GB 2.5" SATA SSD Occupy front disk slot	2*240GB 2.5" SATA SSD
No. of RAID Card	1	1	1
Support RAID Mode	RAID 0/1/10 & JBOD	RAID 0/1/10 & JBOD	RAID 0/1/10 & JBOD
Disk Slots	7 (for data) + 1 (for OS)	7 (for data) + 1 (for OS)	12 (for data)+2 (for OS)
Cache Disks	Options 2.5" SATA SSD: 480GB/960GB/ 1.92TB/3.84TB/7.68TB	Options 2.5" SATA SSD: 480GB/960GB/ 1.92TB/3.84TB/7.68TB	Options 2.5" SATA SSD: 480GB/960GB/ 1.92TB/3.84TB/7.68TB 2.5" U.2 NVMe SSD: 480GB/960GB/ 1.6TB/1.92TB/3.2TB/3.84TB/7.68TB
Data Disks	Options 2.5" SAS HDD: 1.2TB/1.8TB/2.4TB 3.5" SAS HDD: 4TB 3.5" SATA HDD: 4TB/6TB/8TB/10TB/12TB 2.5" SATA SSD: 480GB/960GB/1.92TB/3.84TB/7.68TB	Options 2.5" SAS HDD: 1.2TB/1.8TB/2.4TB 3.5" SAS HDD: 4TB 3.5" SATA HDD: 4TB/6TB/8TB/10TB/12TB 2.5" SATA SSD: 480GB/960GB/1.92TB/3.84TB/7.68TB	Options 2.5" SAS HDD: 1.2TB/1.8TB/2.4TB 3.5" SAS HDD: 4TB 3.5" SATA HDD: 4TB/6TB/8TB/10TB/12TB 2.5" SATA SSD: 480GB/960GB/1.92TB/3.84TB/7.68TB
Default NIC	4*GE+2*10GE	4*GE+2*10GE	4*GE+2*10GE
Optional NIC (SFP+)	1GE (electrical), 10GE, 25GE	1GE (electrical), 10GE, 25GE	1GE (electrical), 10GE, 25GE
USB 3.0	4	4	4
Dimension (Support 19inch Standard Form Factor Rack)	2U 86.1mm(H) *447mm(W) *790mm(L)	2U 86.1mm(H) *447mm(W) *790mm(L)	2U 86.1mm(H) *447mm(W) *790mm(L)
Gross Weight	28kg	28kg	28kg
Net Weight	23kg	23kg	23kg
Total PCIe Slots	3	3	3
Available PCIe Slots	1	1	2
Redundant Power Supply	2	2	2
Power Supply Hot Swap	Yes	Yes	Yes
Working Power	Typical Power: 354W Max Power: 900W	Typical Power: 354W Max Power: 900W	Typical Power: 900W or 546W or 690W Max Power: 1300W or 900W or 800W
VGA	1	1	1
IPMI (1GbE)	1	1	1



Model	aServer-3305	aServer-3405	aServer-3305F
CPU	Intel 6326 2.9GHz 16C/32T 185W	Intel 5318Y 2.1GHz 24C/48T 165W	Intel 6326 2.90GHz 16C/32T 185W
CPU Cache	24MB	36MB	24MB
No. of CPU	2	2	2
Supported Memory	32GB or 64GB DDR4 3200MHz	32GB or 64GB DDR4 3200MHz	32GB or 64GB DDR4 3200MHz
Configured Memory	32GB*4	32GB*4	32GB*4
RAM Slots	32	32	32
OS Disk	2*240GB 2.5" SATA SSD	2*240GB 2.5" SATA SSD	2*240GB 2.5" SATA SSD
No. of RAID Card	1	1	1
Support RAID Mode	RAID 0/1/10 & JBOD	RAID 0/1/10 & JBOD	RAID 0/1/10 & JBOD
Disk Slots	12 (for data)+2 (for OS)	12 (for data)+2 (for OS)	24 (U.2 NVMe) + 2 (SATA for OS)
Cache Disks	Options 2.5" SATA SSD: 480GB/960GB/ 1.92TB/3.84TB/7.68TB 2.5" U.2 NVMe SSD: 480GB/960GB/ 1.6TB/1.92TB/3.2TB/3.84TB/7.68TB	Options 2.5" SATA SSD: 480GB/960GB/ 1.92TB/3.84TB/7.68TB 2.5" U.2 NVMe SSD: 480GB/960GB/ 1.6TB/1.92TB/3.2TB/3.84TB/7.68TB	N/A
Data Disks	Options 2.5" SAS HDD: 1.2TB/1.8TB/2.4TB 3.5" SAS HDD: 4TB 3.5" SATA HDD: 4TB/6TB/8TB/10TB/12TB 2.5" SATA SSD: 480GB/960GB/1.92TB/3.84TB/7.68TB	Options 2.5" SAS HDD: 1.2TB/1.8TB/2.4TB 3.5" SAS HDD: 4TB 3.5" SATA HDD: 4TB/6TB/8TB/10TB/12TB 2.5" SATA SSD: 480GB/960GB/1.92TB/3.84TB/7.68TB	Options: 2.5" U.2 NVMe SSD: 480GB/960GB/ 1.6TB/1.92TB/3.2TB/3.84TB/7.68TB
Default NIC	4*GE+2*10GE	4*GE+2*10GE	4*GE+2*10GE
Optional NIC (SFP+)	1GE (electrical), 10GE, 25GE	1GE (electrical), 10GE, 25GE	1GE (electrical), 10GE, 25GE
USB 3.0	4	4	4
Dimension (Support 19inch Standard Form Factor Rack)	2U 86.1mm(H) *447mm(W) *790mm(L)	2U 86.1mm(H) *447mm(W) *790mm(L)	2U 87mm(H) *478.8mm(W) *811.7mm(L)
Gross Weight	39kg	39kg	37.5kg
Net Weight	32kg	32kg	28kg
Total PCIe Slots	3	3	3
Available PCIe Slots	2	2	2
Redundant Power Supply	2	2	2
Power Supply Hot Swap	Yes	Yes	Yes
Working Power	Typical Power: 900W or 798W or 673W Max Power: 1300W or 900W	Typical Power: 900W or 624W or 758W Max Power: 1300W or 800W	Typical Power: 900W Max Power: 1600W or 1500W
VGA	1	1	2
IPMI (1GbE)	1	1	1

Model	aServer-3405(648)	aServer-3405(860)	aServer-J-100Z
CPU	Intel 6348 2.60GHz 28C56T 235W	Intel 8360Y 2.40GHz 36C72T 250W	Intel N5105 2.0GHz 4C4T 10W
CPU Cache	42MB	54MB	4MB
No. of CPU	2	2	1
Supported Memory	32GB or 64GB DDR4 3200MHz	32GB or 64GB DDR4 3200MHz	16GB
Configured Memory	32GB*4	32GB*4	16GB*1
RAM Slots	32	32	1
OS Disk	2*240GB 2.5" SATA SSD	2*240GB 2.5" SATA SSD	64GB (onboard)
No. of RAID Card	1	1	N/A
Support RAID Mode	RAID 0/1/10 & JBOD	RAID 0/1/10 & JBOD	N/A
Disk Slots	12 (for data)+2 (for OS)	12 (for data)+2 (for OS)	N/A
Cache Disks	Options 2.5" SATA SSD: 480GB/960GB/ 1.92TB/3.84TB/7.68TB 2.5" U.2 NVMe SSD: 480GB/960GB/ 1.6TB/1.92TB/3.2TB/3.84TB/7.68TB	Options 2.5" SATA SSD: 480GB/960GB/ 1.92TB/3.84TB/7.68TB 2.5" U.2 NVMe SSD: 480GB/960GB/ 1.6TB/1.92TB/3.2TB/3.84TB/7.68TB	N/A
Data Disks	Options 2.5" SAS HDD: 1.2TB/1.8TB/2.4TB 3.5" SAS HDD: 4TB 3.5" SATA HDD: 4TB/6TB/8TB/10TB/12TB 2.5" SATA SSD: 480GB/960GB/1.92TB/3.84TB/7.68TB	Options 2.5" SAS HDD: 1.2TB/1.8TB/2.4TB 3.5" SAS HDD: 4TB 3.5" SATA HDD: 4TB/6TB/8TB/10TB/12TB 2.5" SATA SSD: 480GB/960GB/1.92TB/3.84TB/7.68TB	N/A
Default NIC	4*GE+2*10GE	4*GE+2*10GE	1*GE
Optional NIC (SFP+)	1GE (electrical), 10GE, 25GE	1GE (electrical), 10GE, 25GE	N/A
USB 3.0	4	4	4
Dimension (Support 19inch Standard Form Factor Rack)	2U 780*435*87mm or 790*447*86.1mm(L*W*H)	2U 780*435*87mm or 790*447*86.1mm(L*W*H)	Not support standard rack 178mm(L)*110mm(W)*28mm(H)
Gross Weight	29/37.5kg	29/37.5kg	-
Net Weight	24/28kg	24/28kg	0.93KG
Total PCIe Slots	3	3	N/A
Available PCIe Slots	2	2	N/A
Redundant Power Supply	2	2	1 (non-redundant)
Power Supply Hot Swap	Yes	Yes	No
Working Power	Typical Power: 900W or 691W Max Power: 1500W or 1600W or 1300W	Typical Power: 1000W or 791W Max Power: 1500W or 1600W	Typical Power: 17W Max Power: 60W
VGA	1	1	No, with 2*HDMI +1*DP
IPMI (1GbE)	1	1	N/A

Sangfor HCI aServer Models Datasheet

Model	aServer-X5-1200	aServer-X5-2205	aServer-X5-2305P
CPU	Intel Xeon Gold 6526Y CPU 2.80GHZ 16C/32T 192W	Intel Xeon Gold 6526Y CPU 2.80GHZ 16C/32T 192W	Intel Xeon Gold 6530 CPU 2.1GHZ 32C/64T 270W
CPU Cache	37.5MB	37.5MB	160MB
No. of CPU	1	2	2
Supported Memory	32GB or 64GB DDR5 5600Mhz	32GB or 64GB DDR5 5600Mhz	32GB or 64GB DDR5 5600Mhz
Configured Memory	32GB*4	32GB*4	32GB*4
RAM Slots	16	32	32
OS Disk	1*480GB 2.5" SATA SSD	2*480GB 2.5" SATA SSD	2*480GB 2.5" SATA SSD
No. of RAID Card	1	1	1
Support RAID Mode	RAID 0/1/10 & JBOD	RAID 0/1/10 & JBOD	RAID 0/1/10 & JBOD
Disk Slots	7 (for data)+1 (for OS)	12 (for data)+2 (for OS)	12 (for data)+2 (for OS)
Cache Disks (subject to change)	Options 2.5" SATA SSD: 480GB/960GB/1.92TB/3.84TB/7.68TB 2.5" U.2 NVMe SSD: 480GB/960GB/1.6TB/1.92TB/3.2TB/3.84TB/7.68TB	Options 2.5" SATA SSD: 480GB/960GB/1.92TB/3.84TB/7.68TB 2.5" U.2 NVMe SSD: 1.6TB/1.92TB/3.2TB/3.84TB/7.68TB	Options 2.5" SATA SSD: 480GB/960GB/1.92TB/3.84TB/7.68TB 2.5" U.2 NVMe SSD: 1.6TB/1.92TB/3.2TB/3.84TB/7.68TB
Data Disks (subject to change)	Options 3.5" SATA HDD: 4TB/6TB/8TB/10TB/12TB/16TB 2.5" SATA SSD: 480GB/960GB/1.92TB/3.84TB/7.68TB 2.5" U.2 NVMe SSD: 1.6TB/1.92TB/3.2TB/3.84TB/7.68TB	Options 3.5" SATA HDD: 4TB/6TB/8TB/10TB/12TB/16TB 2.5" SATA SSD: 480GB/960GB/1.92TB/3.84TB/7.68TB 2.5" U.2 NVMe SSD: 1.6TB/1.92TB/3.2TB/3.84TB/7.68TB	Options 3.5" SATA HDD: 4TB/6TB/8TB/10TB/12TB/16TB 2.5" SATA SSD: 480GB/960GB/1.92TB/3.84TB/7.68TB 2.5" U.2 NVMe SSD: 1.6TB/1.92TB/3.2TB/3.84TB/7.68TB
Default NIC	4*GE+2*10GE	4*GE+2*10GE	4*GE+2*10GE
Optional NIC	1GE, 10GE, 25GE	1GE, 10GE, 25GE	1GE, 10GE, 25GE
USB	3	4	4
Dimension (Support 19inch Standard Form Factor Rack)	2U 800mm*435mm*87mm or 797mm*447mm*87mm	2U 800mm*435mm*87mm or 798mm*447mm*86mm or 797mm*447mm*87mm	2U 800mm*435mm*87mm or 798mm*447mm*86mm or 797mm*447mm*87mm
Gross Weight	47kg	41kg	41kg
Net Weight	37kg	32kg	32kg
Total PCIe Slots	3	4	4
Available PCIe Slots	1	2	2
Redundant Power Specs	800W/1300W/1600W[100-240VAC][240VDC]	1500W/2000W[100-240VAC][240VDC]	2000W[100-240VAC][240VDC]
Power Supply Hot Swap	Yes	Yes	Yes
Working Power	Typical Power: 650W or 900W Max Power: 800W or 1300W or 1600W	Typical Power: 797W Max Power: 1500W or 2000W	Typical Power: 1016W Max Power: 2000W
VGA	2	1	1
IPMI (1GbE)	1	1	1
Working Temperature	10-35 C	10-35 C	10-35 C
Working Humidity	35%-80%RH	35%-80%RH	35%-80%RH

Model	aServer-X5-2405	aServer-X5-G2200
CPU	Intel Xeon Gold 6548N CPU 2.8GHZ 32C/64T 250W	Intel Xeon Gold 6526Y CPU 2.80GHZ 16C/32T 192W
CPU Cache	60MB	37.5MB
No. of CPU	2	2
Supported Memory	32GB or 64GB DDR5 5600Mhz	32GB or 64GB DDR5 5600Mhz
Configured Memory	32GB*4	32GB*4
RAM Slots	32	32
OS Disk	2*480GB 2.5" SATA SSD	2*480GB 2.5" SATA SSD (occupying data disk slots)
No. of RAID Card	1	1
Support RAID Mode	RAID 0/1/10 & JBOD	RAID 0/1/10 & JBOD
Disk Slots	12 (for data)+2 (for OS)	10 (for data)+2 (for OS)
Cache Disks (subject to change)	Options 2.5" SATA SSD: 480GB/960GB/1.92TB/3.84TB/7.68TB 2.5" U.2 NVMe SSD: 1.6TB/1.92TB/3.2TB/3.84TB/7.68TB	Options 2.5" SATA SSD: 480GB/960GB/1.92TB/3.84TB/7.68TB 2.5" U.2 NVMe SSD: 1.6TB/1.92TB/3.2TB/3.84TB/7.68TB
Data Disks (subject to change)	Options 3.5" SATA HDD: 4TB/6TB/8TB/10TB/12TB/16TB 2.5" SATA SSD: 480GB/960GB/1.92TB/3.84TB/7.68TB 2.5" U.2 NVMe SSD: 1.6TB/1.92TB/3.2TB/3.84TB/7.68TB	Options 3.5" SATA HDD: 4TB/6TB/8TB/10TB/12TB/16TB 2.5" SATA SSD: 480GB/960GB/1.92TB/3.84TB/7.68TB 2.5" U.2 NVMe SSD: 1.6TB/1.92TB/3.2TB/3.84TB/7.68TB
Default NIC	4*GE+2*10GE	4*GE+2*10GE
Optional NIC	1GE, 10GE, 25GE	1GE, 10GE, 25GE
USB	4	4
Dimension (Support 19inch Standard Form Factor Rack)	2U 800mm*435mm*87mm or 798mm*447mm*86mm or 797mm*447mm*87mm	2U 770mm*446mm*87mm or 797mm*447mm*87.0mm
Gross Weight	41kg	41kg
Net Weight	32kg	32kg
Total PCIe Slots	4	5
Available PCIe Slots	2	3
Redundant Power Specs	2000W[100-240VAC] [240VDC]	2400W[100-240VAC] [240VDC]
Power Supply Hot Swap	Yes	Yes
Working Power	Typical Power: 976W Max Power: 2000W	Typical Power: 1850W Max Power: 2400W
VGA	1	1
IPMI (1GbE)	1	1
Working Temperature	10-35 C	10-35 C
Working Humidity	35%-80%RH	35%-80%RH

Sangfor HCI Software Modules

Sangfor can also provide a software-only HCI solution compatible with most of the commodity servers commercially available on the market.

License (Per physical CPU)	aSV (Server Virtualization)	Server virtualization, HA, DRS, Automated Hot Add, backup, clone, ...
License (Per physical CPU)	aSAN (Storage Virtualization)	Storage virtualization, 2-3 copies, SSD read and write acceleration, data locality, data striping, VM-based storage policy,...
License (Per physical CPU)	aNET (Network Virtualization)	Network virtualization, distributed firewall, drawable topology, visualized network, virtual switch, virtual router...
License (Per physical CPU)	aSEC (Security Virtualization)	Built-in cloud security center that includes real-time virus prevention, ransomware prevention, vulnerabilities discovery and repair, distributed IPS, etc.,
License (Per physical CPU)	SCP (Cloud Management)	Cloud management platform, IaaS, IT resource automation, self-service portal, reporting, multi-tenancy, billing & metering,...
License (Per physical CPU)	aSC (Stretched Cluster)	Active-active stretched cluster, zero RPO and cross-site high availability
License (Per VMware VM)	aHM (VMware Backup)	Provides integration with vCenter with unified management and backup for VMware VMs
License (Per VM)	CDP (Continuous Data Protection)	Near-zero data protection with file-level recovery
License (Per VM)	aDR (Disaster Recovery)	Active-passive disaster recovery between Sangfor HCI, seconds-level RPO and 1-click failover
License (Per VM or capacity)	hDR (Heterogeneous DR)	Active-passive disaster recovery between 3rd party infrastructure and Sangfor HCI, zero RPO and minutes-level RTO
License (per vCPU)	SKE (Kubernetes Engine)	Sangfor Kubernetes Engine for container management and orchestration
License (per DB instance or per application system)	DMP (Database Management Platform)	Database management platform for 1-stop SQL database lifecycle management

* NFV components on HCI may employ IPSec VPN technologies using encryption algorithms.

- IPSec Protocol: AH, ESP
- D-H Group: MODP768 Group(1), MODP1024 Group(2), MODP1536 Group(5)
- IPSec Authentication Algorithm: MD5, SHA-1, SHA-2, SM3
- IPSec Encryption Algorithm: DES, 3DES, AES-128, AES-256, SANGFOR_DES, SCB2, SM4

CERTIFIED BY CCC, FCC and CE.



SANGFOR HYPER-CONVERGED INFRASTRUCTURE

INTERNATIONAL OFFICES

SANGFOR SINGAPORE

380 Jln Besar,
#08-04/05 ARC 380, Singapore 209000
Tel: (+65) 6276-9133

SANGFOR HONG KONG (CHINA)

Unit 1612-16, 16/F, The Metropolis Tower,
10 Metropolis Drive, Hung Hom, Kowloon, Hong Kong
Tel: (+852) 3845-5410

SANGFOR INDONESIA

Atrium Mulia 3rd Floor, Jl. H.R. Rasuna Said Kav.
B 10-11 Kuningan, Setia Budi, Kecamatan Setiabudi, Kota Jakarta Selatan, Daerah Khusus Ibukota Jakarta 12910, Indonesia
Tel: (+62) 21-2168-4132

SANGFOR MALAYSIA

Suite 11.01 & 11.02 , Level 11 of Centrepoint North, Mid Valley City,
Lingkaran Syed Putra, 59200 Kuala Lumpur, Malaysia
Tel: (+60) 3-2702-3645

SANGFOR THAILAND

141 Major Tower Thonglor (Thonglor10) Floor 11 Sukhumvit Road,
Kholngtan Nuea Wattana BKK, Thailand 10110
Tel: (+66) 02-002-0118

SANGFOR PHILIPPINES

Unit 14B 14th Floor, Rufino Pacific Tower, 6784 Ayala Avenue,
Makati City, Philippines
Tel: (+63) 9688998920

SANGFOR VIETNAM

Unit 11.01 MB Sunny Tower, 259 Tran Hung Dao Street,
Co Giang Ward, District 1, Ho Chi Minh City, Vietnam
Tel: (+84) 903-631-488

SANGFOR SOUTH KOREA

305, 76, Yeonmujang-gil, Seongdong-gu,
Seoul, Republic of Korea.
Tel: (+82) 2-6261-0999

SANGFOR UAE

Office #718, Publishing Pavilion, Production City, Dubai, UAE
Tel: (+971) 52855-2520

SANGFOR PAKISTAN

Office No.210, 2nd Floor, "The Forum",
Plot No. G-20, Block 9, Khayaban-e-Jami, Clifton, Karachi, Pakistan
South Region: (+92) 321 2373991
North Region: (+92) 304 5170714
Central Region: (+92) 314 519 8386

SANGFOR ITALY

Sede Principale: Via Marsala 36B, 21013, Gallarate (VA)
Sede a Roma: Via del Serafico, 89-91, 00142 Roma RM
Tel: (+39) 0331-6487-73

SANGFOR TÜRKİYE

A Blok. Kat 51. D 643, Atatürk Mh, Ertuğrul Gazi Sk,
Metropol İstanbul Sitesi. 34758 Ataşehir/İstanbul
Tel: (+90) 216-5156969

SANGFOR LATAM OFFICE

Torre Onyx Segundo Piso, Av. Río San Joaquin 406, Amp Granada,
Miguel Hidalgo, C.P. 11529, Ciudad de México, CDMX.

SANGFOR SAUDI ARABIA OFFICE

Office 505, Al Dhabab Complex 5th Floor, 6347 Anas Ibn Aous,
Al Murabba, Riyadh.

AVAILABLE SOLUTIONS

Athena SWG - Secure Web Gateway

Secure User Internet Access Behaviour

Athena NGFW - Next Generation Firewall

Smarter AI-Powered Perimeter Defence

Athena EPP - Endpoint Protection Platform

The Future of Endpoint Security

Athena NDR - Network Detection and Response

Smart Efficient Detection and Response

Athena XDR - Extended Detection and Response

Revolutionize Your Cyber Defense with Intelligent XDR

Athena MDR - Managed Threat Detection & Response Service

Faster Response Through Human/AI Collaboration

Athena SASE - Secure Access Service Edge

Simple Security for Branches & Remote Users

TIARA - Threat Identification, Analysis and Risk Assessment

Smart Threat Analysis and Assessment

IR - Incident Response

Sangfor Incident Response – One Call Away

HCI - Hyper-Converged Infrastructure

Fully Converge Your Data Center

VDI - aDesk Virtual Desktop Infrastructure

Seamless Experience, Secure and Efficient

VMware Alternative

The Ideal Platform to Streamline Your off-VMware Journey

EDS - Enterprise Distributed Storage

The Only Secured Data Storage You Need

SD-WAN

Boost Your Branch with Sangfor

MCS - Managed Cloud Services

Your Exclusive Digital Infrastructure



Sales: sales@sangfor.com

Marketing: marketing@sangfor.com

Global Service Center: +60 12711 7129 (or 7511)

www.sangfor.com