



SANGFOR

— POWERED BY —
DELLTechnologies

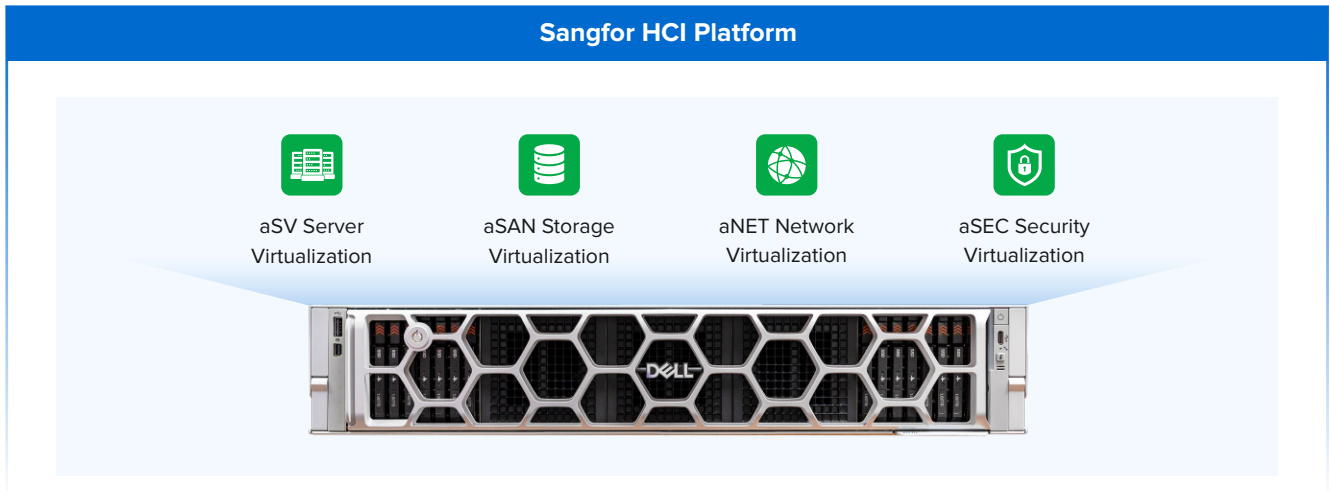
Powerhouse Collaboration

Sangfor & Dell Cloud Excellence



Solution Overview

Sangfor Technologies and Dell Technologies are proud to announce their strategic collaboration, jointly delivering a certified hyperconverged infrastructure (HCI) solution optimized for enterprise-grade workloads. This partnership integrates Sangfor's software-defined HCI platform with Dell's high-performance PowerEdge R770 servers to create a simple, reliable and secure, private cloud to hybrid cloud foundation.



Sangfor HCI integrates compute, storage, networking and security cloud architecture for data center modernization. By leveraging the innovative 3rd generation HCI platform, customers can easily build and manage their virtual and cloud infrastructure with state-of-the-art simplicity in mind. It is the ideal infrastructure building block to run both legacy and modern applications with resiliency and efficiency.



**1-stop software-defined
data center solution**



**Easy operation and quick installation for
business-critical applications**



**Integrates with any commodity servers
commercially available in the market**



**Build your own private cloud, extend to a
public cloud or create your own Hybrid Cloud**



The Dell PowerEdge R770 is a 2U, dual-socket rack server designed for high performance computing with optimal power efficiency and balanced performance to boost your data center productivity. It balances advanced computing power with virtualization, cloud-native applications, hyperscale workloads, and scale out databases.



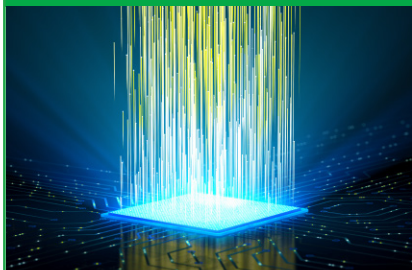
Boost Datacenter Efficiencies and Performance

Enterprise-Ready Architecture



Designed for enterprise-grade and scalable environments, the PowerEdge R770 standardizes deployment and integrates seamlessly into existing data center infrastructures.

Next-Generation Processing Power



Powered by dual Intel® Xeon® 6 processors featuring both E-cores and P-cores, the R770 delivers up to 1.69× better performance per watt than previous generations—enhancing computing efficiency and maximizing rack density.

Flexible I/O Configurations



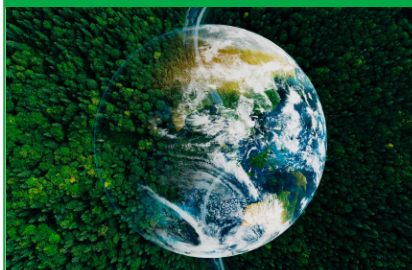
Available in rear I/O hot-aisle and front I/O cold-aisle configurations to support diverse deployment needs and simplify data center maintenance.

Enhanced Serviceability & Uptime



The front I/O cold-aisle design improves accessibility, reduces maintenance time, and increases system uptime—contributing to higher operational efficiency and reliability.

Optimized for Sustainability



Featuring Dell's Smart Power and Cooling Technology, the R770 is engineered for efficient air-cooling to reduce energy consumption and support long-term sustainability goals.

Lower Total Cost of Ownership



Intelligent power optimization and efficient thermal design help significantly cut operational costs while ensuring consistent, high-performance output for critical workloads.



Highlights of the Solution

Plug-and-Play Assurance

Seamless Deployment with Global Protection



- ✓ Pre-installed Sangfor HCI software
- ✓ Joint Sangfor–Dell compatibility
- ✓ Global Dell warranty coverage (170 locations)

Reliable & Stable

0 RPO & 99.99% Availability



- ✓ Proactive HA & DRS
- ✓ Complete DR Solution (DRM)
- ✓ Built-in snapshot & backup
- ✓ Native data redundancy

High Performance

50% Higher IOPS than Peers



- ✓ RDMA & SPDK turbo support
- ✓ Full SSD
- ✓ Data locality
- ✓ AI-based DB optimization
- ✓ Up to 1.69x CPU performance improvement

Comprehensive Security

All-rounded security scheme to protect apps and data



- ✓ VM encryption
- ✓ Smart micro-segmentation
- ✓ 1-stop NFVs
- ✓ Cloud security center aSEC



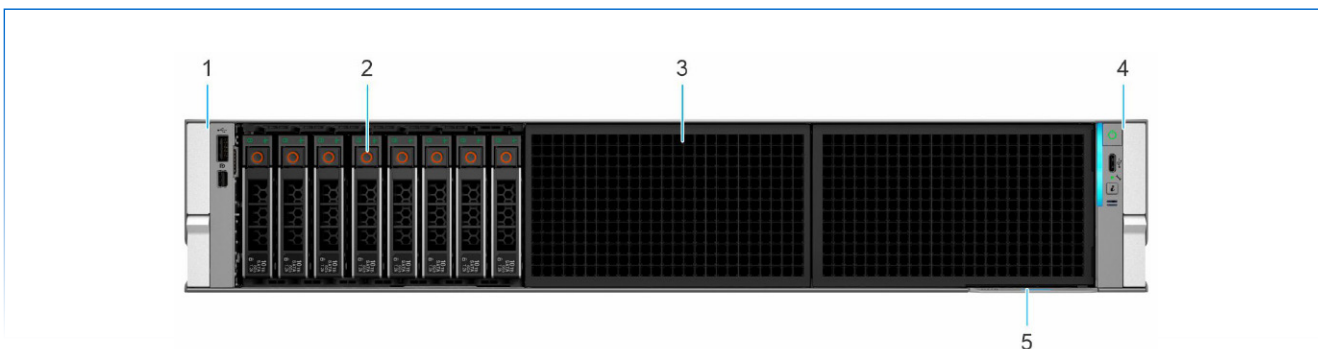
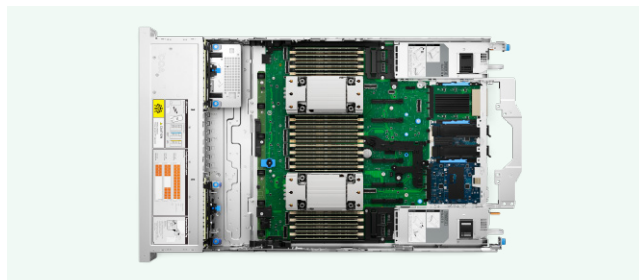
Datasheet

Model	R770 (6507P)	R770 (6520P)	R770 (6530P)	R770 (6740P)
Dimension (L*W*H mm)	772*482*86.8	772*482*86.8	772*482*86.8	772*482*86.8
CPU	2* Intel® Xeon® 6507P CPU 3.5GHz 8C/16T 150W	2* Intel® Xeon® 6520P CPU 2.4GHz 24C/48T 210W	2* Intel® Xeon® 6530P CPU 2.3GHz 32C/64T 225W	2* Intel® Xeon® 6740P CPU 2.1GHz 48C/96T 270W
Memory Type	DDR5	DDR5	DDR5	DDR5
Memory	256GB (32GB*8)	256GB (32GB*8)	256GB (32GB*8)	256GB (32GB*8)
Memory Slots	32	32	32	32

Model	R770 (6507P)	R770 (6520P)	R770 (6530P)	R770 (6740P)
System Disk	2*480GB SSD RAID1	2*480GB SSD RAID1	2*480GB SSD RAID1	2*480GB SSD RAID1
Available Disk Slots	8* SAS4/SATA/NVMe Direct 2.5'	8* SAS4/SATA/NVMe Direct 2.5'	16* SAS4/SATA 2.5' + 8NVMe Direct 2.5'	16* SAS4/SATA 2.5' + 8NVMe Direct 2.5'
Disk Options	2.5' SATA SSD 1.92TB(r) /1.92TB/3.84TB(r) 2.5' U.2 SSD 1.92TB(r) /3.84TB(r)/7.86TB(r) /3.2TB(w)	2.5' SATA SSD 1.92TB(r) /1.92TB/3.84TB(r) 2.5' U.2 SSD 1.92TB(r) /3.84TB(r)/7.86TB(r) /3.2TB(w)	2.5' SATA SSD 1.92TB(r) /1.92TB/3.84TB(r) 2.5' U.2 SSD 1.92TB(r) /3.84TB(r)/7.86TB(r) /3.2TB(w)	2.5' SATA SSD 1.92TB(r) /1.92TB/3.84TB(r) 2.5' U.2 SSD 1.92TB(r) /3.84TB(r)/7.86TB(r) /3.2TB(w)
Default NIC	4*GE+4*10GE Optical Ports	4*GE+4*10GE Optical Ports	4*GE+4*10GE Optical Ports	4*GE+4*25GE Optical Ports
Network Card Option	2*25GE Optical Ports 2*10GE Optical Ports	2*25GE Optical Ports 2*10GE Optical Ports	2*25GE Optical Ports 2*10GE Optical Ports	2*25GE Optical Ports 2*10GE Optical Ports
PCIe Type	5.0	5.0	5.0	5.0
Total PCIe Slot	6	6	6	5
Spare PCIe Slot	4	4	4	2
GPU	N/A	N/A	N/A	N/A
USB	Rear 2*USB3.0 / Front 1*USB2.0 Type C	Rear 2*USB3.0 / Front 1*USB2.0 Type C	Rear 2*USB3.0 / Front 1*USB2.0 Type C	Rear 2*USB3.0 / Front 1*USB2.0 Type C
PSU	1100W Dual PSU	1100W Dual PSU	1500W Dual PSU	1500W Dual PSU
Cross Weight	36.2Kg	36.2Kg	40.33Kg	40.33Kg
Net Weight	27.2Kg	27.2Kg	31.33Kg	31.33Kg
Regulations	CE,FCC,CCC,RCM,ENERGY STAR,CECP,CEC https://www.dell.com/support/product-details/en-us/product/poweredge-r770/resources/regulatory			

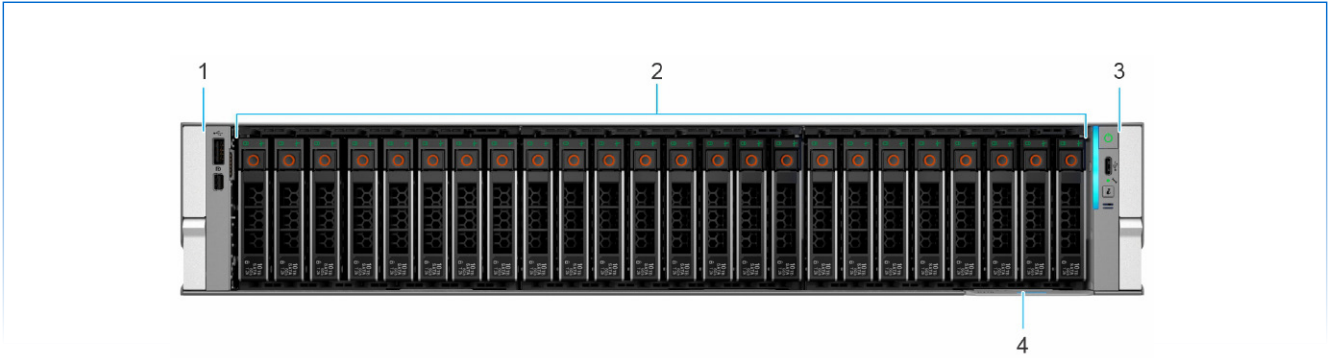


Server Photos



1 Figure 1. Front view of 8 x 2.5-inch drive system

Item	Ports, panels, and slots	Icon	Description
1	Left Control Panel (LCP) - Secondary	N/A	Contains the USB port and Mini-Displayport. NOTE: The KVM module is optional, and LCP - Secondary blank is default in the left control panel.
2	Drive	N/A	Enables you to install drives that are supported on your system.
3	Drive blank	N/A	Drive blank is available in eight drive configuration and should not be removed.
4	Right Control Panel (RCP) - Primary	N/A	Contains the system health LED, system ID, power button, Type-C USB port, and the host status LED.
5	Express Service Tag	N/A	The Express Service Tag is a slide-out label panel that contains system information such as Service Tag, NIC, MAC address, and so on.



2 Figure 2. Front view of 24 x 2.5-inch drive system

Item	Ports, panels, and slots	Icon	Description
1	Left Control Panel (LCP) - Secondary	N/A	Contains the USB port and Mini-Displayport. NOTE: The KVM module is optional, and LCP - Secondary blank is default in the left control panel.
2	Drive	N/A	Enables you to install drives that are supported on your system.
3	Right Control Panel (RCP) - Primary	N/A	Contains the system health LED, system ID, power button, Type-C USB port, and the host status LED.
4	Express Service Tag	N/A	The Express Service Tag is a slide-out label panel that contains system information such as Service Tag, NIC, MAC address, and so on.

Images are for reference only. For actual specifications and further details, please refer to the Dell PowerEdge R770 Technical Guide.

