



**SANGFOR**

# Give Branch Business Digital Transformation a Boost

---



Make IT Simpler,  
More Secure and Valuable!

## Sangfor SD-WAN Introduction

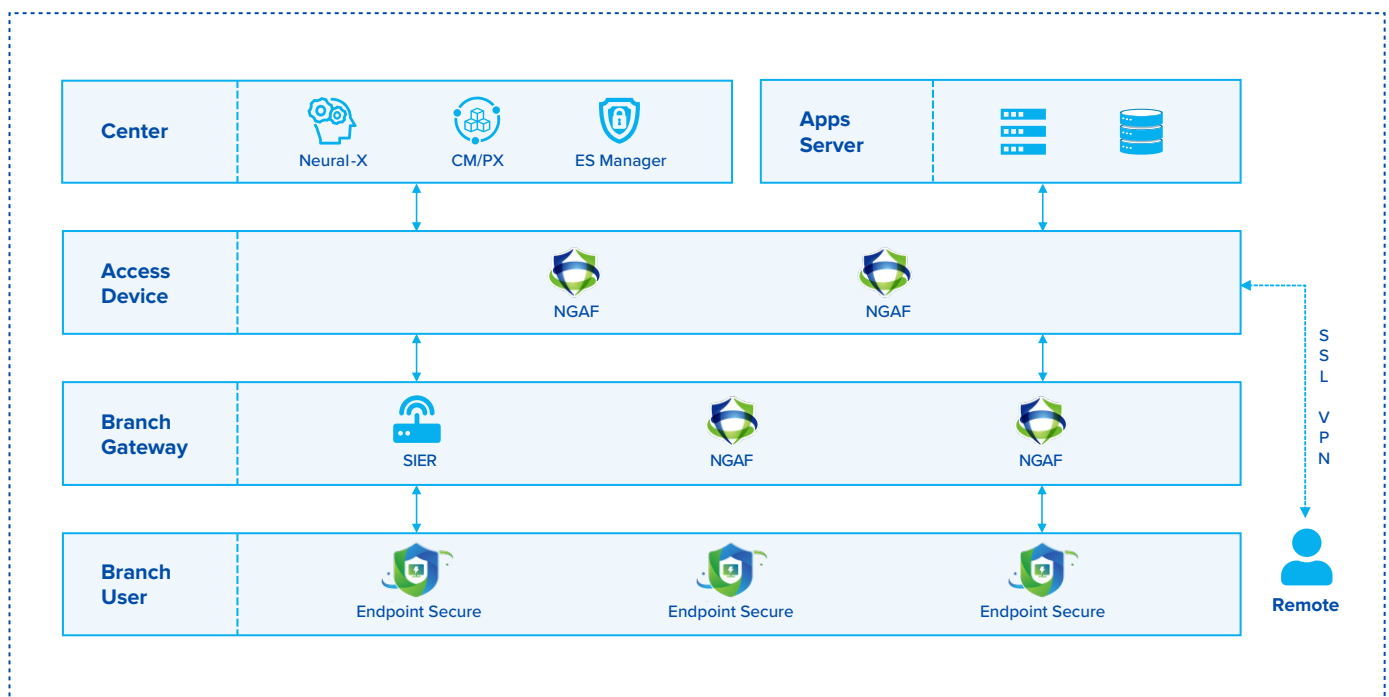


Digital transformation has forced many who rely on MPLS network architecture to seek out easier ways to support cloud apps and explosive business expansion. Some are turning to cost-effective internet broadband and LTE, yet are experiencing serious issues.

Before choosing their internet link, enterprises must consider three major issues: link interruption, efficiency, and incident response and compliance. First, with no SLA in the link to guarantee availability, there is a risk of link interruption and slow down. Secondly, user and staff efficiency decrease when users have access to time-wasting sites with streaming video or online gaming sites. Finally, unrestricted access to the internet may open your company up to potential cyber-attacks and non-compliance fines.

Sangfor SD-WAN is an integrated solution, designed to enhance business reliability and provide layered protection of assets, from user to server. SD-WAN is proven great for even enterprises with limited budgets and provides extremely simple to O&M with strong security capabilities.

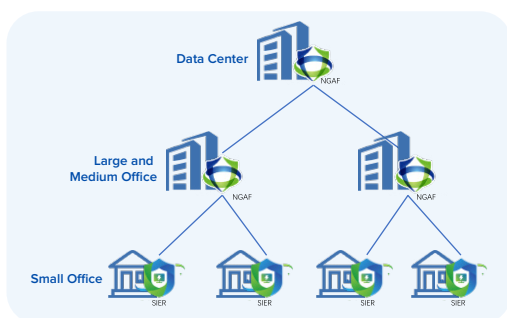
## Sangfor Secure SD-WAN Architecture



Gateway	Endpoint	Cloud
<ul style="list-style-type: none"> <li>• <b>Next Generation Application Firewall (NGFW):</b> Total Security for WFH and Office Environments</li> <li>• <b>Sangfor Intelligent Edge Router (SIER):</b> <ul style="list-style-type: none"> <li>- Cost Effective Protection &amp; Security</li> <li>- Design for small office with cost-effective price and basic security functions</li> <li>- Provides embedded LTE&amp;WIFI model for choose</li> </ul> </li> <li>• <b>Sangfor Central Manager (CM):</b> Unified Policy Operation &amp; Status Visualization</li> </ul>	<ul style="list-style-type: none"> <li>• <b>Endpoint Secure (ES):</b> Immediate Defense Against Malware &amp; APT threats at endpoint</li> <li>• <b>Endpoint Secure Manager:</b> Policy &amp; Liscence Management Solution for Endpoint Secure</li> </ul>	<ul style="list-style-type: none"> <li>• <b>Neural-X:</b> <ul style="list-style-type: none"> <li>- AI-Enabled Threat Intelligence &amp; Analytics Cloud Platform</li> <li>- Interconnected with 20,000+ devices deployed at customer sites and third-party organizations, with open-source resources.</li> </ul> </li> <li>• <b>Platform-X:</b> Easily Manage IT Assets, NGAF and Endpoint Secure in Cloud</li> </ul>

## Components Suggestion

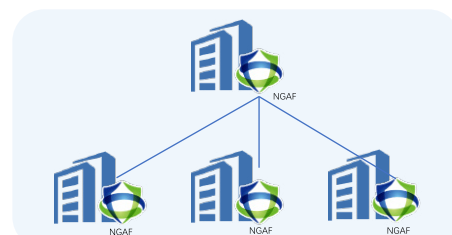
### Large-Scale Small Footprint Scenario



	<b>Data Center:</b> NGAF
	<b>Large and Medium Office:</b> NGAF
	<b>Small Office:</b> SIER
	<b>Endpoint Option:</b> Endpoint Security + ES Manager
	<b>Management Option:</b> Central Manager
	<b>Typical Case:</b> Retail, Logistics, Public Utilities, Gas Station, Multi-level Government, etc.

### Strong Security Requirements Scenario

	<b>Data Center:</b> NGAF
	<b>Branch Office:</b> NGAF
	<b>Endpoint Option:</b> Endpoint Security + ES Manager
	<b>Management Option:</b> Platform-X or Central Manager
	<b>Typical Case:</b> Government, Financial, Education, Manufactory, etc.

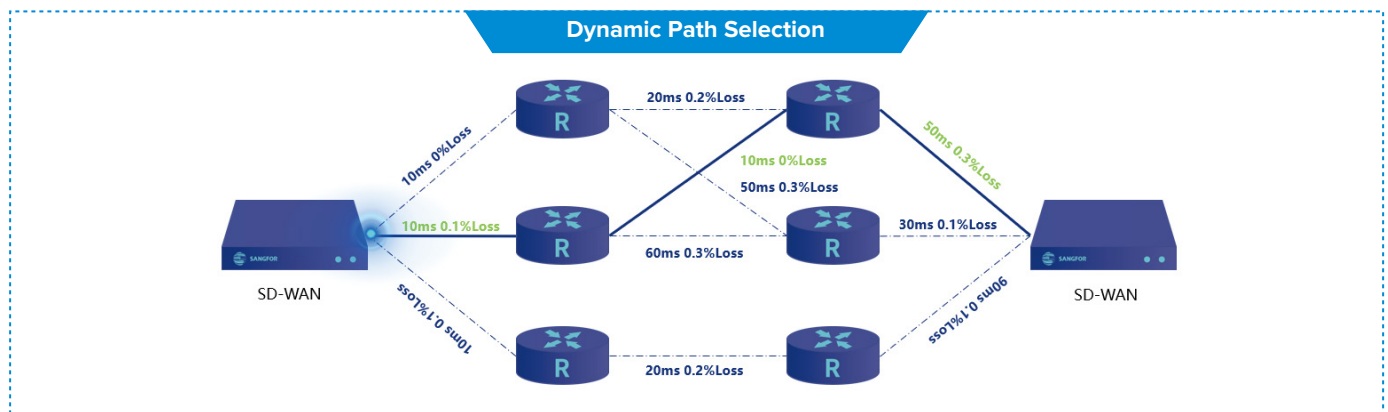
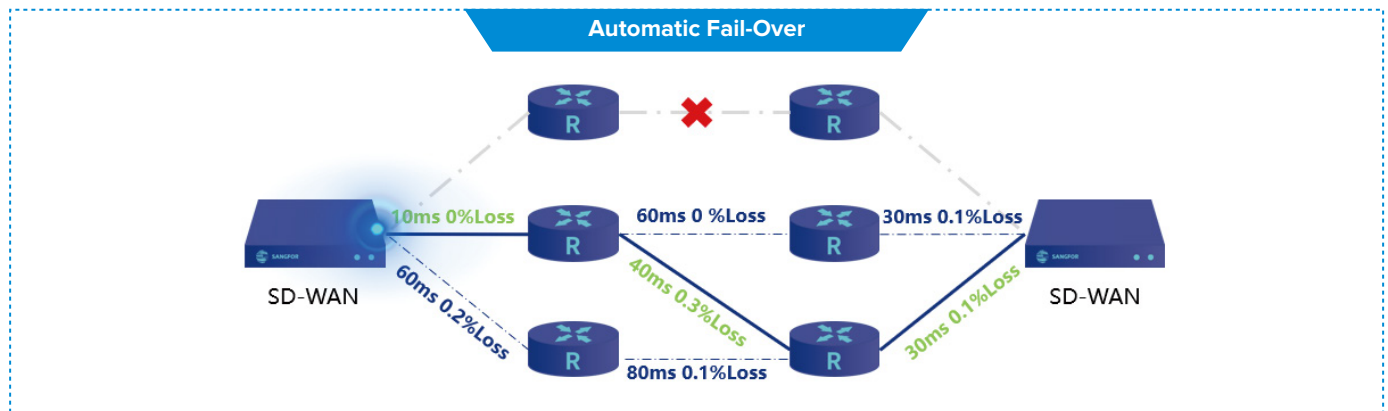




## Highlights & Benefits of Sangfor Secure SD-WAN

### 1. Guarantees Business Availability

Real-time tunnel quality detection makes it possible for traffic to fail-over in seconds, without user perception. SD-WAN dynamically selects the best quality tunnel for critical apps.



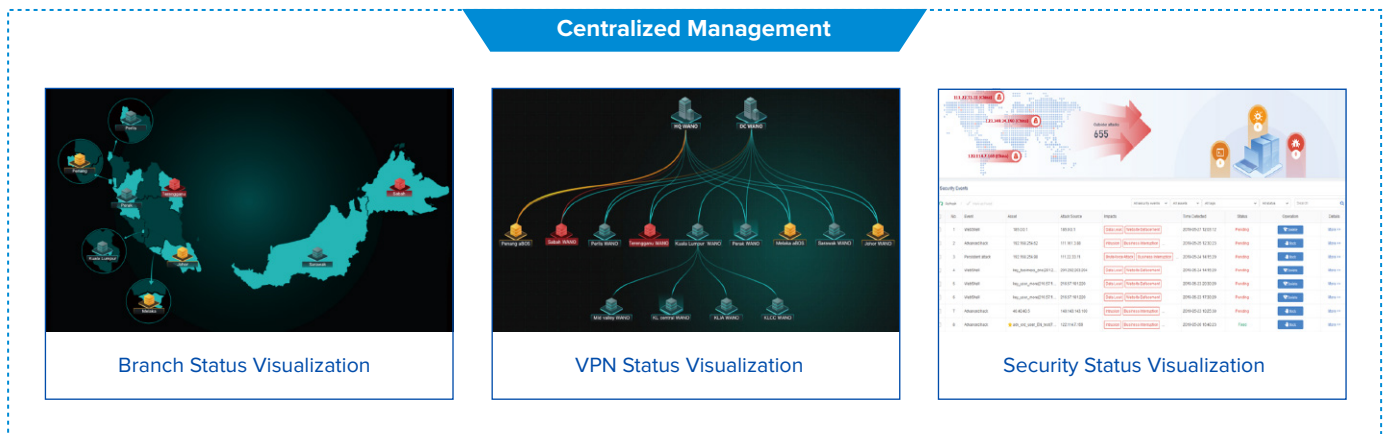
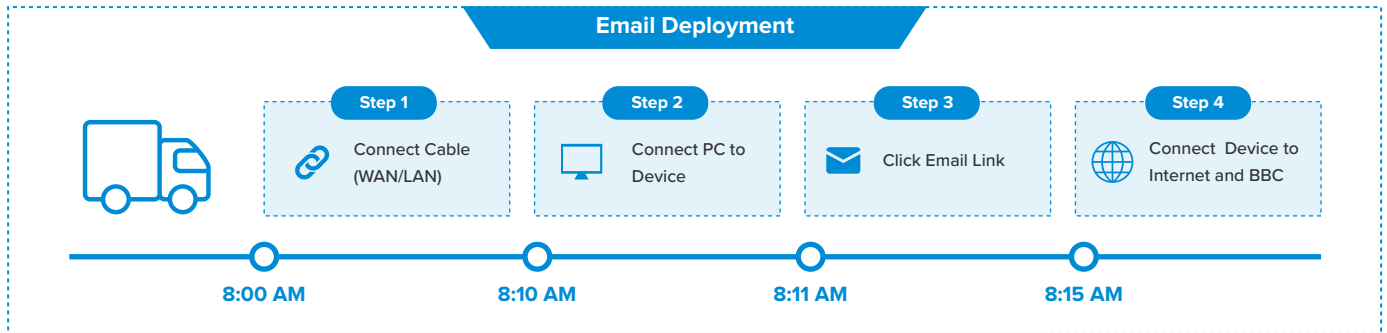
### 2. Improve Efficiency

Block or limit non-productive activities and sites, and ensure bandwidth for business applications based on local and international cloud URL and application database.



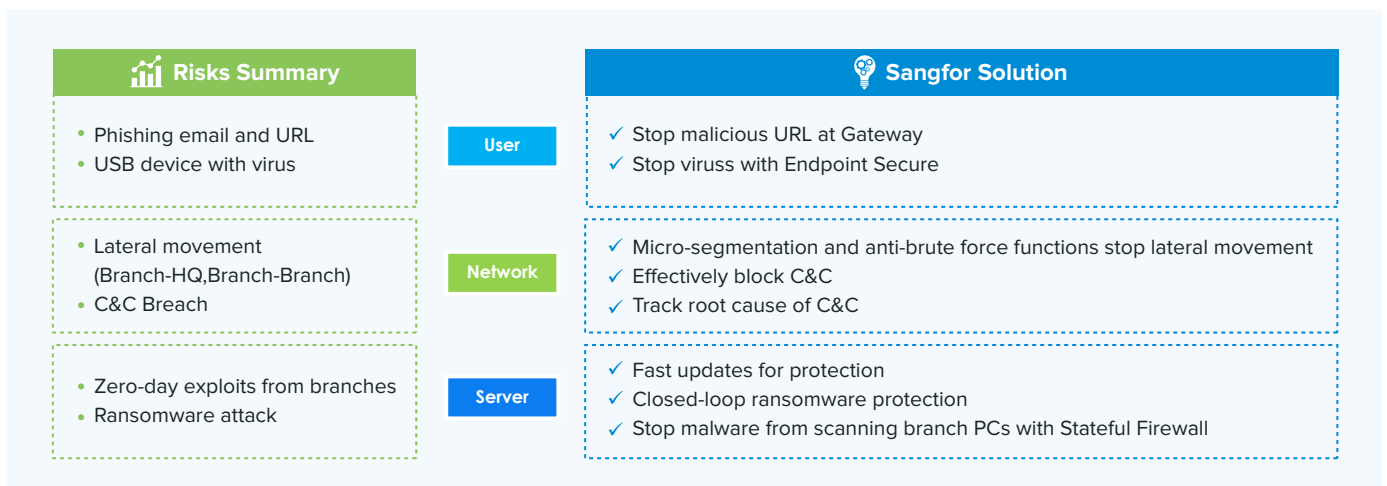
### 3. Simplify Operation & Management

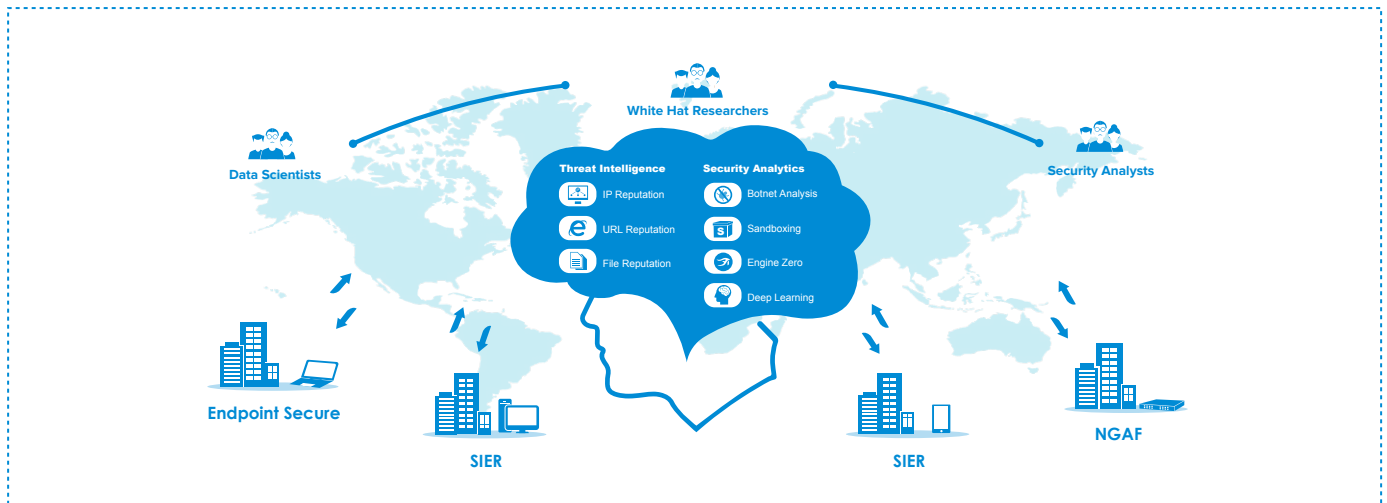
Deploy SD-WAN with one email and one click in branch offices to provide centralized management and a unified policy, simplifying daily O&M.



### 4. Comprehensive Security

Layered protection for endpoints, network, and server, blocking malware and suspicious traffic immediately from the endpoints and gateways.





## Key Features Comparison

Category		SIER	NGAF
Common SD-WAN	Email Deployment	✓	✓
	Select Optimal Path for Critical Apps	✓	✓
	VPN Tunnel Bonding	✓	✓
	Path Selection Based on Bandwidth	✓	✓
	Automatic Fail-over	✓	✓
Security	Level 4 Stateful Firewall	✓	✓
	Application Access Control	✓	✓
	Application Bandwidth Management	✓	✓
	Local and AI-based Web Filtering with Neural-X	✓	✓
	SSL VPN		✓
	IPS		✓
	Anti-Virus with AI (Engine Zero)		✓
	Threat intelligence feed with Neural-X		✓
	WAF		✓
	Correlate response with Sangfor Endpoint Secure		✓
Other	Embedded 3G/4G Model Option	✓	
	Embedded WIFI Model Option	✓	

Category	Features	Central Manager	Platform-X
Modality	Public Cloud POP		✓
	Software in local offices (Sangfor aCloud / VMware)	✓	
	Hardware in local offices	✓	
Product Support	NGAF	✓	✓
	SIER	✓	
	Internet Access Gateway	✓	
	WANO	✓	
	Endpoint Secure		✓
Management	IT asset management		✓
	Centralized security logs & Reports		✓
	Device online status	✓	✓
	VPN status	✓	
	SD-WAN/VPN management	✓	
	Configuration management	✓	✓
	License management	✓	
	Multi-tenant management		✓
	Level 2 administrators	✓	✓

## Sizing Guide

Model	SDW-R1080	SDW-R1080-WIFI	SDW-R1080-PRO
VPN Throughput	100Mbps	100Mbps	100Mbps
Firewall Throughput	300Mbps	300Mbps	300Mbps
Network Interface	5*GbE	5*GbE	5*GbE
Max. WAN Interface	4	4	4
Integrated LTE	N/A	N/A	1* Embedded LTE
Integrated WIFI	N/A	2.4GHz/5GHz	2.4GHz/5GHz
Max. WIFI User	N/A	30	30
System Dimensions (mm)	220*110*28	220*110*28	220*110*28

\* More information please refer to SIER Brochure

Model	M4500-F-I	M5100-F-I	M5150-F-I	M5200-F-I	M5250-F-I	M5300-F-I
Profile	Desktop	1U	1U	1U	1U	1U
Firewall Throughput <sup>1</sup>	2 Gbps	2.8 Gbps	3.5 Gbps	4.9 Gbps	5.5 Gbps	12 Gbps
NGFW Throughput <sup>2</sup>	1.4 Gbps	2.5 Gbps	2.5 Gbps	2.8 Gbps	2.8 Gbps	5 Gbps
IPS + WAF Throughput (HTTP)	1.2 Gbps	1.4 Gbps	1.4 Gbps	2.1 Gbps	2.1 Gbps	3.85 Gbps
Threat Protection <sup>3</sup> Throughput	1 Gbps	1.8 Gbps	1.8 Gbps	2.1 Gbps	2.1 Gbps	4.2 Gbps
IPsec VPN Throughput	250 Mbps	250 Mbps	250 Mbps	375 Mbps	375 Mbps	1 Gbps
Max IPsec VPN Tunnels	300	300	300	500	500	1000
Model	M5400-F-I	M5500-F-I	M5600-F-I	M5800-F-I	M5900-F-I	M6000-F-I
Profile	1U	2U	2U	2U	2U	2U
Firewall Throughput <sup>1</sup>	20 Gbps	25 Gbps	50 Gbps	67 Gbps	105 Gbps	140 Gbps
NGFW Throughput <sup>2</sup>	8.4 Gbps	12.6 Gbps	23 Gbps	31 Gbps	56 Gbps	84 Gbps
IPS + WAF Throughput (HTTP)	5.6 Gbps	8.4 Gbps	14 Gbps	21 Gbps	42 Gbps	56 Gbps
Threat Protection <sup>3</sup> Throughput	5.6 Gbps	9.1 Gbps	18 Gbps	26.5 Gbps	50.4 Gbps	67.2 Gbps
IPsec VPN Throughput	1.25 Mbps	2 Gbps	3 Gbps	3.75 Gbps	5 Gbps	5 Gbps
Max IPsec VPN Tunnels	1500	3,000	4,000	5,000	10,000	10,000

1. 1518 Bytes UDP Packets.

2. NGFW is measured with Firewall, Bandwidth Management, IPS, Application Control.

3. Threat Prevention is measured with Firewall, Bandwidth Management IPS, Application Control, Anti Virus.

#### Power and Hardware Specifications

Model	M4500-F-I	M5100-F-I	M5150-F-I	M5200-F-I	M5250-F-I	M5300-F-I
Support Dual Power Supplies	N/A	N/A	N/A	N/A	N/A	N/A
System Dimensions (mm3)	175 x 275 x 45	300 x 430 x 45	300 x 430 x 45	300 x 430 x 45	300 x 430 x 45	400 x 430 x 45
Model	M5400-F-I	M5500-F-I	M5600-F-I	M5800-F-I	M5900-F-I	M6000-F-I
Support Dual Power Supplies	N/A	✓	✓	✓	✓	✓
System Dimensions (mm3)	400 x 430 x 45	440 x 600 x 90	440 x 600 x 90	440 x 600 x 90	440 x 600 x 90	440 x 600 x 90



## Network Interfaces

Model	M4500-F-I	M5100-F-I	M5150-F-I	M5200-F-I	M5250-F-I	M5300-F-I
Bypass (Copper)	N/A	1 pair	1 pair	1 pair	2 pairs	1 pair
10/100/1000 Base-T	4	4	6	6	6	6
1G Fiber SFP	N/A	N/A	N/A	N/A	2	2
10G Fiber SFP+	N/A	N/A	N/A	N/A	N/A	N/A
Model	M5400-F-I	M5500-F-I	M5600-F-I	M5800-F-I	M5900-F-I	M6000-F-I
Bypass (Copper)	3 pairs	3 pairs	3 pairs	3 pairs	2 pairs	4 pairs
10/100/1000 Base-T	6	6	6	10	4	8
1G Fiber SFP	N/A	4	4	4	4	8
10G Fiber SFP+	2	2	2	2	2	4

1. All performance values are “up to” and vary depending on the system configuration.

\* More information please refer to NGAF Brochure

Module	Max. Branches	Network Interface	RAM	HD Capacity	Power [Watt] (Typical)
BBC-1000	200	6*GbE	2*8G	240G SSD 1T HDD	180W
BBC-2000	2000	6*GbE	2*8G	240G SSD 1T HDD	180W
BBC-3000	2000	6*GbE	2*16G	480G SSD 2T HDD	250W

Module	Regulatory Compliance	System Dimensions (mm)	System/ Packaged Weight	Temperature Range	Relative Humidity
BBC-1000	CE,FCC	390*430*44.5	6.7Kg/8.7Kg	0℃~40℃	5%~95% non-condensing
BBC-2000	CE,FCC	390*430*44.5	6.7Kg/8.7Kg	0℃~40℃	5%~95% non-condensing
BBC-3000	CE,FCC	430*660*44.5	10.7Kg/20Kg	0℃~40℃	5%~95% non-condensing

Module	Max. Branches	CPU Requirements	RAM Requirements	HD Capacity Requirements
vBBC-200	200	2*2.4 GHz	8G	800G
vBBC-2000	2000	4*2.4 GHz	8G	800G
Platform Requirements	Sangfor HCI/aCloud, VMware			

# SANGFOR SECURE SD-WAN

---

## SANGFOR INTERNATIONAL OFFICES

### SANGFOR SINGAPORE

8 Burn Road # 04-09, Trivex,  
Singapore (369977)  
Tel: (+65) 6276-9133

### SANGFOR HONG KONG (CHINA)

Unit 04, 6/F, Greenfield Tower, Concordia Plaza, No.1 Science  
Museum Road, Tsim Sha Tsui East, Kowloon, Hong Kong  
Tel: (+852) 3427-9160

### SANGFOR INDONESIA

MD Place 3rd Floor, Jl Setiabudi No.7, Jakarta Selatan  
12910, Indonesia  
Tel: (+62) 21-2966-9283

### SANGFOR MALAYSIA

No. 47-10 The Boulevard Offices, Mid Valley City, Lingkaran  
Syed Putra, 59200 Kuala Lumpur, Malaysia  
Tel: (+60) 3-2702-3644

### SANGFOR THAILAND

6th Floor, 518/5 Maneeya Center Building, Ploenchit Road,  
Lumpini, Patumwan, Bangkok, 10330 Thailand  
Tel: (+66) 22-517700

### SANGFOR PHILIPPINES

7A, OPL Building, 100 Don Carlos Palanca, Legazpi, Makati,  
122 Metro, Manila, Philippines.  
Tel: (+63) 917-117-9346

### SANGFOR VIETNAM

4th Floor, M Building, Street C, Phu My Hung,  
Tan Phu Ward, District 7, HCMC, Vietnam  
Tel: (+84) 287-1005018

### SANGFOR SOUTH KOREA

Floor 17, Room 1703, Yuwon bldg. 116, Seosomun-ro,  
Jung-gu, Seoul, Republic of Korea  
Tel: (+82) 2-6261-0999

### SANGFOR EMEA

D-81 (C-Wing), Dubai Silicon Oasis HQ Building 341041 Dubai,  
United Arab Emirates  
Tel: (+971) 5296-06471

### SANGFOR PAKISTAN

44, Navy Housing Scheme, ZamZamma, Karachi, Pakistan  
Tel: (+92) 333-3365967

### SANGFOR ITALY

Sede Legale ed Operativa via E. Berlinguer, 920834 Nova  
Milanese MB Italia  
Tel: (+39) 340-061-6767

### SANGFOR SPAIN

Calle de Ribadesella 7, 28250 Torrelodones,  
Madrid (SPAIN)  
Tel: (+34) 609-64-40-04

### SANGFOR USA

46721 Fremont Blvd, Fremont, CA 94538, USA  
Tel: (+1) 510-573-0715

## AVAILABLE SOLUTIONS

<b>IAG</b>	Simplify User & Network Management
<b>NGAF</b>	Smarter Security Powered By AI
<b>Endpoint Secure</b>	The Future of Endpoint Security
<b>Cyber Command</b>	Powerful Intelligent Threat and Detection Platform
<b>HCI</b>	Driving Hyperconvergence to Fully Converged
<b>VDI</b>	Ultimate User Experience that Beats PC
<b>SD-WAN</b>	Boost Your Branch Business With Sangfor
<b>SIER</b>	Simplify & Intelligence Your Branch Network
<b>Access</b>	Cloud-based SASE for Branch Offices & Remote Users
<b>WANO</b>	Enjoy a LAN Speed on your WAN



**SANGFOR**



**Sales:** [sales@sangfor.com](mailto:sales@sangfor.com)

**Marketing:** [marketing@sangfor.com](mailto:marketing@sangfor.com)

**Global Service Center:** +60 12711 7129 (or 7511)

[www.sangfor.com](http://www.sangfor.com)

## OUR SOCIAL NETWORKS



<https://twitter.com/SANGFOR>



<https://www.linkedin.com/company/sangfor-technologies>



<https://www.facebook.com/Sangfor>



<https://plus.google.com/+SangforTechnologies>



<https://www.youtube.com/user/SangforTechnologies>